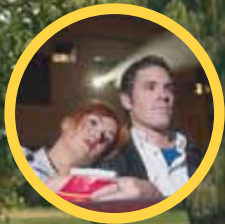


TRANSBORDER

Yass to Canberra

servicing the Yass region

No more parking costs

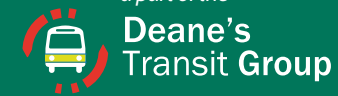


- YASS TOWN
- MURRUMBATEMAN
- HALL
- BELCONNEN
- CALVARY HOSPITAL
- CANBERRA CITY (Civic)
- RUSSELL
- BARTON
- WODEN (Interchange)
- THE CANBERRA HOSPITAL



Transborder Express

a part of the



(02) 6299 3722
transborder.com.au

56
Years Service
1954 - 2010

Route Maps

Selected images courtesy of Tourism NSW TG10374 TBX Yass-Canberra Timetable - www.transitgraphics.com.au

NSW Ministry of Transport Accreditation: 9366
ACT Road Transport Authority Accreditation: ACTBS004TC/RR

Transborder buses stop at ACTION bus stops on all designated routes.

Yass to Canberra

via Murrumbateman and Hall



Routes 981 & 982 do not operate on Public Holidays including Canberra Day. See note (a) below for operation in the Christmas - New Year holidays.

Departure points	Monday to Friday					
	a	a	b	b	a	a
Route number/name	981 am	981 am	'Koala' am	'Emu' am	982 am	'Wallaby' (981) pm
Yass (Orion/Laidlaw Sts) - via Ford St to -	6.40	7.05
Yass Depot (Rossi St)	6.50	7.15	8.45	3.35
Yass (Woolworths)	6.53	7.18	8.48	3.36
Yass (Grand Junction Rd)	6.55	7.20	8.50	3.37
Yass Valley Way (Barton Hwy roundabout)	6.59	7.24	8.54	3.42
Murrumbateman Village	7.07	7.33	9.05	3.52
Murrumbateman Winery	7.09	7.36	9.08	...
Hall Village (Victoria St at school)	9.21	...
Hall Interchange (Gladstone St)	b8.05	b8.05
Belconnen Bus Station, Lathlain St (Bay 3)	b8.24	...	9.35	...
Lake Ginninderra College	b8.25
Calvary Hospital (Haydon Dr)	9.40	...
Northbourne/Macarthur Aves	7.42	8.21
Civic Interchange (Bay 6)	7.46	8.25	...	b8.28	9.48	e4.48
CIT Reid	7.52	8.31
Russell	7.55	8.34
Barton (DFAT Sydney Ave)	8.01	8.40
Woden Interchange (Bay 18)	8.10	8.50
The Canberra Hospital (Yamba Dr)	8.15	8.55

Timetable Notes

- a - A restricted service operates over the Christmas - New Year holiday period. Please check with Transborder or consult our website or the timetable at the bus stop for up to date information.
- b - School days only.
- c - Service from Belconnen connects with Yass and Murrumbateman service at Hall at 4.30pm.
- d - Services divert into Hall upon request only.
- e - Arrives 13 minutes earlier during school holidays.

Conditions of Travel

- Children** under 16 years of age, proof of age may be required.
- Pensioners** are required to show the driver their NSW or ACT concession card.
- Students** 16 years and over are required to show the driver a student ID card or be in school or college uniform.
- Same Day Return** tickets are to be used on the same day as the forward journey. Seats on some return journeys may not be available to SDR holders and another service may have to be used. *The "Canberra" fare is the same for the entire region south of Hall. No extra fare is charged for travel to Russell, Barton and Woden.*

Canberra to Yass

via Hall and Murrumbateman



Routes 981 & 982 do not operate on Public Holidays including Canberra Day. See note (a) below for operation in the Christmas - New Year holidays.

Departure points	Monday to Friday					
	a	b	b	a	a	a
Route number/name	982 pm	'Emu' pm	'Koala' pm	981 pm	981 pm	981 pm
The Canberra Hospital (Yamba Dr. ACTION shelter)	4.28	...	5.08
Woden Interchange (Bay 18)	4.35	...	5.15
Barton (DFAT Sydney Ave)	4.45	...	5.25
Russell (Russell Dr)	4.51	5.11	5.31
Reid (opp. CIT, Constitution Ave)	4.54	5.14	5.36
Civic Interchange (Bay 6)	2.05	3.55	...	5.05	5.25	5.45
Northbourne/Macarthur Aves	5.11	5.31	5.51
Calvary Hosp. (Haydon Dr)	2.11
Belconnen Bus Station, Lathlain St (Bay 6)	2.17	...	c4.05
Hall Interchange (Victoria St)	...	4.30	c4.30
Hall Village (Victoria St opp. school)	d	4.31	d
Murrumbateman Winery	2.45	4.47	...	5.38	5.58	6.18
Murrumbateman Village	2.47	4.55	...	5.41	6.01	6.21
Yass Valley Way (Barton Hwy roundabout)	2.56	5.05	...	5.50	6.10	6.31
Yass (MacDonald St)	3.00	5.10	...	5.54	6.14	6.34
Yass Information Centre	3.01	5.11	...	5.56	6.16	6.36
Yass Depot (Rossi St)	3.04	5.15	...	6.00	6.20	6.40
- via Ford St to -	6.05	6.25	6.45
Yass (Orion/Laidlaw Sts)	6.05	6.25	6.45

AlpineXpress

Did you know that Transborder operates five star luxury coach services to the Snowy Mountains?

An AlpineXpress coach departs Canberra for Cooma, Jindabyne, Bullocks Flat and Thredbo, seven days a week from June to October.

Find out more and book online at transborder.com.au or telephone 6299 3722.



Transborder has been operating a reliable, safe and economical daily coach service between Yass and Canberra for 56 years.

Over 50 schools and colleges in the ACT are serviced by Transborder from Yass, Murrumbateman, Hall and Wallaroo. Four schools in Yass are serviced from Murrumbateman and Gundaroo Road. Individual timetables are available for each of the 10 services.

School services for residents of NSW are free under the SSTS (School Student Transport Scheme). Application forms are available from Transborder offices, or telephone 6299 3722, or e-mail to: capitalinfo@deanestransitgroup.com.au. Regrettably, SSTS forms cannot be e-mailed.

CountryLink

Transborder provides CountryLink with two coach services in South East NSW.

From Canberra, Transborder provides CountryLink coach services to:

- Eden via Cooma, Nimmitabel, Bemboka, Bega, Merimbula and Pambula; and
- Bombala via Cooma, both connecting with Xplorer trains in Canberra for Sydney.



(02) 6299 3722
transborder.com.au